



# LoopView Network Management System

## Features

- GUI (Graphical User Interface)
- Runs on PC/Windows XP/2003/ 2000/NT/ME/98 operating system
- Multiple levels of login security
- Fully supports all SNMP v1 functions including commands, alarms, and statistics gathering
- Allows viewing and printing of all node statistics and alarm report
- Single and multiple graphic windows
- Presentation of devices, statistics, and maps
- Scalable up to 10,000 network elements, depending on complexity of NEs
- Groups network elements into hierarchy
- Manual or auto-detect of network elements
- Manual or automatic creation of network maps
- Multiple color display of alarm severity level (loss of power results in an alarm)
- Simplified Chinese version is available now for selected products

## Description

LoopView is a software product that provides a GUI (graphical user interface) for the management of a communications network containing Loop Telecom products. Because it runs on PC/Windows XP/2003/ 2000/NT/ME/98 users can have a GUI management system using a low-cost and popular platform. It is scalable up to 10,000 network elements, depending on complexity of NEs.

The workforce management is facilitated by the multiple levels of login security, which provides the network manager great flexibility of work assignment. The hierarchical grouping features cities, buildings, and rooms allow rapid access to the desired network element. Automatic detection of network elements and automatic creation of the network map facilitate the installation procedure.

All SNMP v1 provided functions are available in LoopView. This includes the execution of all commands, the gathering of all statistics, and the display of all alarm conditions in real time.

The map and the reports can be printed as well as viewed directly.

## Ordering Information

To specify options, choose from the list below.

Model	Description	Note
LV-EN	LoopView for English version	Cover all products
LV-EN-CREMS	LoopView for English version w/ Castle Rock SNMPc Enterprise 7.2 package, w/o hardware	
LV-CS	LoopView for Simplified Chinese	Please see below note <sup>2</sup>
LV-CS-CREMS	LoopView for Simplified Chinese w/ Castle Rock SNMPc Enterprise 7.2 package, w/o hardware	
CREMS	Castle Rock SNMPc Enterprise 7.2 package included Management Server covers unlimited remote JAVA Console <sup>Note 1</sup> , unlimited remote Windows Consoles, 10 Remote Polling Agents, and Extended Software Updates <sup>Note1</sup>	
CRRAE	Castle Rock Remote Access Extension covers Unlimited Polling Agents	
<b>Accessories</b>		
<b>User's Manual</b>		
LoopView -UM	User's Manual (paper, hard copy-optional). A CD version of the manual is already included as standard equipment.	
<b>Maintenance</b>		
LV-ASM	LoopView Annual Software Maintenance	
CREMS-ESU	Castle Rock SNMPc Enterprise 7.2 Extended Software Updates <sup>Note1</sup>	
CREMS-OWR	Castle Rock SNMPc Enterprise 7.2 Out of Warranty Renewal Customer whose Extended Software Updates has lapsed for more than 60 days must purchase the "Out of Warranty Renewal". This will provide an upgrade to the latest version of SNMPc. It also provides a further 12 months of software update protection.	

### Note 1:

- Castle Rock is the trademark of Castle Rock Computing.
- LoopView does not support Remote JAVA Console
- Extended Software Updates: Extended Software Updates covers downloaded patches, feature enhancements and major new versions for one year. All products include the first year of Extended Software Updates free of charge

### Note 2:

- Simplified version only supports selected products; please contact your nearest Loop sales representative.

•

## LoopView Specifications

### System Requirements

<b>CPU</b>	Pentium III 1GHz
<b>Memory</b>	512 MB
<b>Disk Free</b>	2 GB
<b>Screen</b>	800 x 600
<b>Mouse Required</b>	Yes
<b>Server/Poller Operating System</b>	Win XP/2000/2003/NT Will also run under WIN ME and 98 if not using the JAVA console.
<b>Console Operating System</b>	Win XP/2000/2003/NT/ME/98

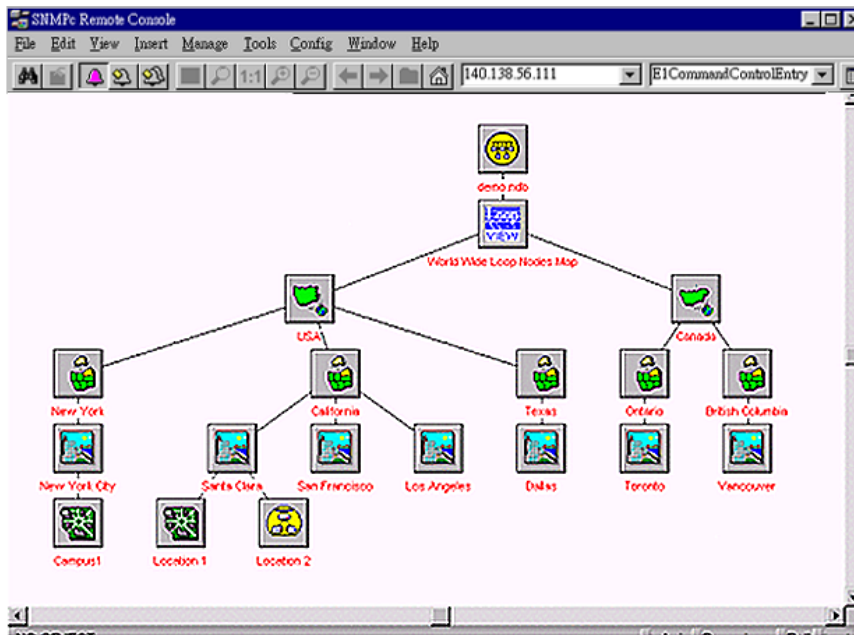
Maximum devices up to 10,000 network elements, depending on complexity of NEs

Login Security 3 levels - (1) Read only,  
(2) Network element commands,  
(3) Supervisor for Configuration and User Administration

Map creation Automatic or manual node detection, automatic or manual map creation

SNMP support Community strings, custom polling, MIB browsing

Displays Multiple views of map, log files, alarms, and device display



**Displays of events in 6 levels of severity in multiple colors**



**Data Comm for Business, Inc.**  
**2949 CR 1000 E**  
**Dewey, IL 61840**  
**Voice 8004DCBNET (800.432.2638)**  
**Fax 217.897.1331**  
**Info [www.dcbnet.com/contact.html](http://www.dcbnet.com/contact.html)**  
**Web [www.dcbnet.com](http://www.dcbnet.com)**