



Loop-IP 6610 E1/T1-Router/Bridge Box

Description



The Loop-IP 6610 E1/T1-Router/Bridge provides connectivity from 10/100 BaseT LAN to E1/T1 WAN in a small metal box.

Loop-IP 6610 E1/T1-Router/Bridge support DB9S console port, which allows users to execute in-service diagnostics and fault isolation from a local or remote terminal. Loop-IP 6610 E1/T1-Router/Bridge also allow remote site to telnet via Ethernet port. The IP 6610 E1/T1-Router/Bridge series also provides multicolor LED indicators on the front panel and ACO (Alarm Cut-Off) button.

Features

- Support 1 LAN port
- Support 1 E1/T1 WAN port
- Support built-in 4-port Ethernet switch function (Optional)
- Support 10/100 BaseT speed auto-sensing and half/ full duplex auto-negotiation.
- Support Router or Bridge mode
- Multicolor LED indicators.
- Local control and diagnostic via DB9S console port.
- Local/ remote management through local console, LAN, or WAN
- Support CLI (command line interface)
- Support SNMP management

**CERTIFIED
ISO-9001**

Ordering Information

To specify options, choose from list below:

Model	Description
Loop-IP 6610-E75-1EH-BR-pp	Bridge function with 75 ohm E1 and 1-port Ethernet
Loop-IP 6610-E75-4EH-BR-pp	Bridge function with 75 ohm E1 and 4-port Ethernet switch
Loop-IP 6610-E75-1EH-RT-pp	Router & Bridge function with 75 ohm E1 and 1-port Ethernet
Loop-IP 6610-E75-4EH-RT-pp	Router & Bridge function with 75 ohm E1 and 4-port Ethernet switch
Loop-IP 6610-E120-1EH-BR-pp	Bridge function with 120 ohm E1 and 1-port Ethernet
Loop-IP 6610-E120-4EH-BR-pp	Bridge function with 120 ohm E1 and 4-port Ethernet switch
Loop-IP 6610-E120-1EH-RT-pp	Router & Bridge function with 120 ohm E1 and 1-port Ethernet
Loop-IP 6610-E120-4EH-RT-pp	Router & Bridge function with 120 ohm E1 and 4-port Ethernet switch
Loop-IP 6610-T-1EH-BR-pp	Bridge function with T1 and 1-port Ethernet
Loop-IP 6610-T-4EH-BR-pp	Bridge function with T1 and 4-port Ethernet switch
Loop-IP 6610-T-1EH-RT-pp	Router & Bridge function with T1 and 1-port Ethernet
Loop-IP 6610-T-4EH-RT-pp	Router & Bridge function with T1 and 4-port Ethernet switch

■ where **pp** is used to select power supply:

pp =	Description	Note
AC	Fixed AC power supply	
DC	Fixed DC power supply (For 24Vdc and 48Vdc: 20-60 Vdc)	
DC24	Fixed DC power supply (For 24Vdc: 18-36 Vdc)	
DC48	Fixed DC power supply (For 48Vdc: 36-72 Vdc)	

Loop-IP 6610 E1/T1-Router/Bridge Box Product Specification

Line Interface

Line Rate	2.048 Mbps ± 50 ppm	Jitter	ITU G.823
Data Rate	n x 64Kbps (n=1 to 31)	Connector	BNC (75 ohm), RJ48C (120 ohm)
Line Code	AMI/ HDB3	Output signal	ITU G.703
Input Signal	ITU G.703	Electric	75 ohm/ 120 ohm twisted pair

LAN Interface

- Support SNMP management
- Physical interface 10/100 Mbps
- RJ45 connector
- Built-in 4-port Ethernet switch

Physical Interface

- WAN: E1/FE1 or T1/FT1 (Integrated CSU/DSU)
- LAN: 10/100 Base-T Ethernet port
 - Speed auto-sensing
 - Half/ full duplex auto-negotiation
 - Auto MDI-X

Routing Protocol

- Static Route
- RIP v1 & v2

Remote Bridge

- PPP/BCP
- User configurable aging time
- Up to 16K MAC Table
- Cisco ISL packet transparent
- VLAN packet transparent
- Bridge with IP

Administration & Diagnostics

- Access control
- Ping
- Loopback
- Telnet

WAN Interface

- Layer 2 protocol: HDLC, PPP
- Single WAN port
- Remote bridge support (padding/ un-padding Ethernet CRC checksum)

Power Interface

- AC : Full range support 100 - 240
- DC: 24V or 48V support manufacture option (36 Vdc - 75 Vdc)
- Power consumption: Max. 6 watt

NAT

- NAT

Management

- SNMP v1/v2
- MIB: MIBII, Ethernet MIB, Transmission MIB
- Telnet
- Serial console with CLI
- TFTP firmware download
- Configuration upload/ download
- SNMP/ Telnet via data channel

Console Port

Connector	DB9S
Electric	RS232
Protocol	CLI

Diagnostics Test

Loopbacks	Line Loopback, Payload Loopback, Local Loopback, and Router to Line Loopback
Test Pattern	15-bit PRBS, 3-in-24, 1-in-8, 2-in-8, ALT 1
Idle Channel	Use of idle channel to perform PRBS diagnostic test

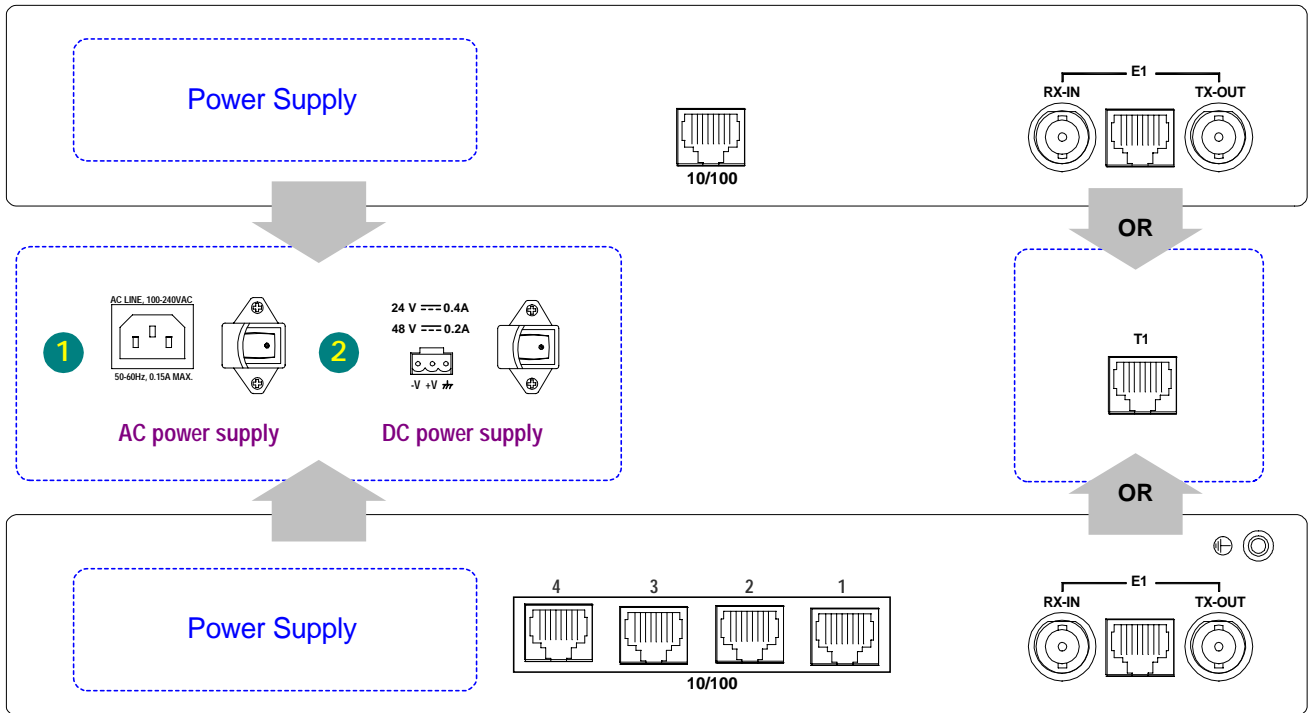
Performance Monitor

Performance Store	Last 24 hours performance in 15-minute intervals and last 7 days in 24-hour summary line, user, and remote site
Performance Reports	Date & Time, Errored Second, Unavailable Second, Bursty Errored Second, Severe Errored Second, Controlled Slip Second, and Loss of Frame Count
Alarm History	Date & Time, Alarm Type, and Location
Alarm Queue	Maximum 40 alarm records which record the latest alarm type, location, and date & time

Physical

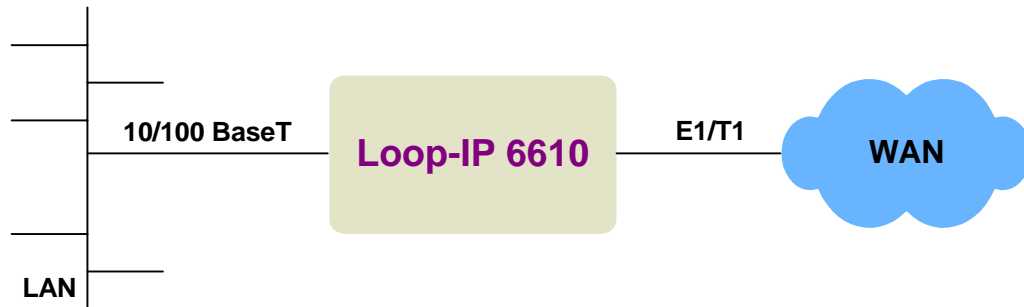
Dimensions	210 x 140 x 41.5 cm (WxHxD)
Temperature	0 -50°C
Humidity	0-95% RH (NON-CONDENSING)
Mounting	Desk-top stackable, wall mount
Power Source (AC)	100 to 240 Vac, 50-60 Hz
Power Source (DC)	For 24Vdc and 48Vdc: 20-60 Vdc For 24Vdc: 18-36 Vdc For 48Vdc: 36-72 Vdc

Front Panel for main unit with 1-port Ethernet



Front Panel for main unit with 4-port Ethernet switch

Application Illustration



LOOP TELECOMMUNICATION INTERNATIONAL, INC.

Worldwide

8F, No. 8, Hsin Ann Road,
Science-Based Industrial Park
Hsinchu, Taiwan 300
Tel:+886-3-578-7696
Fax:+886-3-564-6272
www.LoopTelecom.com
sales@loop.com.tw

Taipei, Taiwan

2F, No. 40, Section 2,
Tuan-Hwa S. Road,
Taipei, Taiwan 106
Tel:+886-2-2784-4000
Fax:+886-2-2754-2325

North America

8 Carrick Road
Palm Beach Gardens
Florida 33418, U.S.A.
Tel:+1-561-627-7947
Fax:+1-561-627-6615
jimber561@aol.com

Suzhou China

Tel:+86-512-6252-0456
Fax:+86-512-6252-7641
www.looptech.com.cn
Info@looptech.com.cn
Sales@looptech.com.cn

Tianjin China

Tel:+86-22-8789-2753
Fax:+86-22-8789-0344
Loop@loop-tj.com